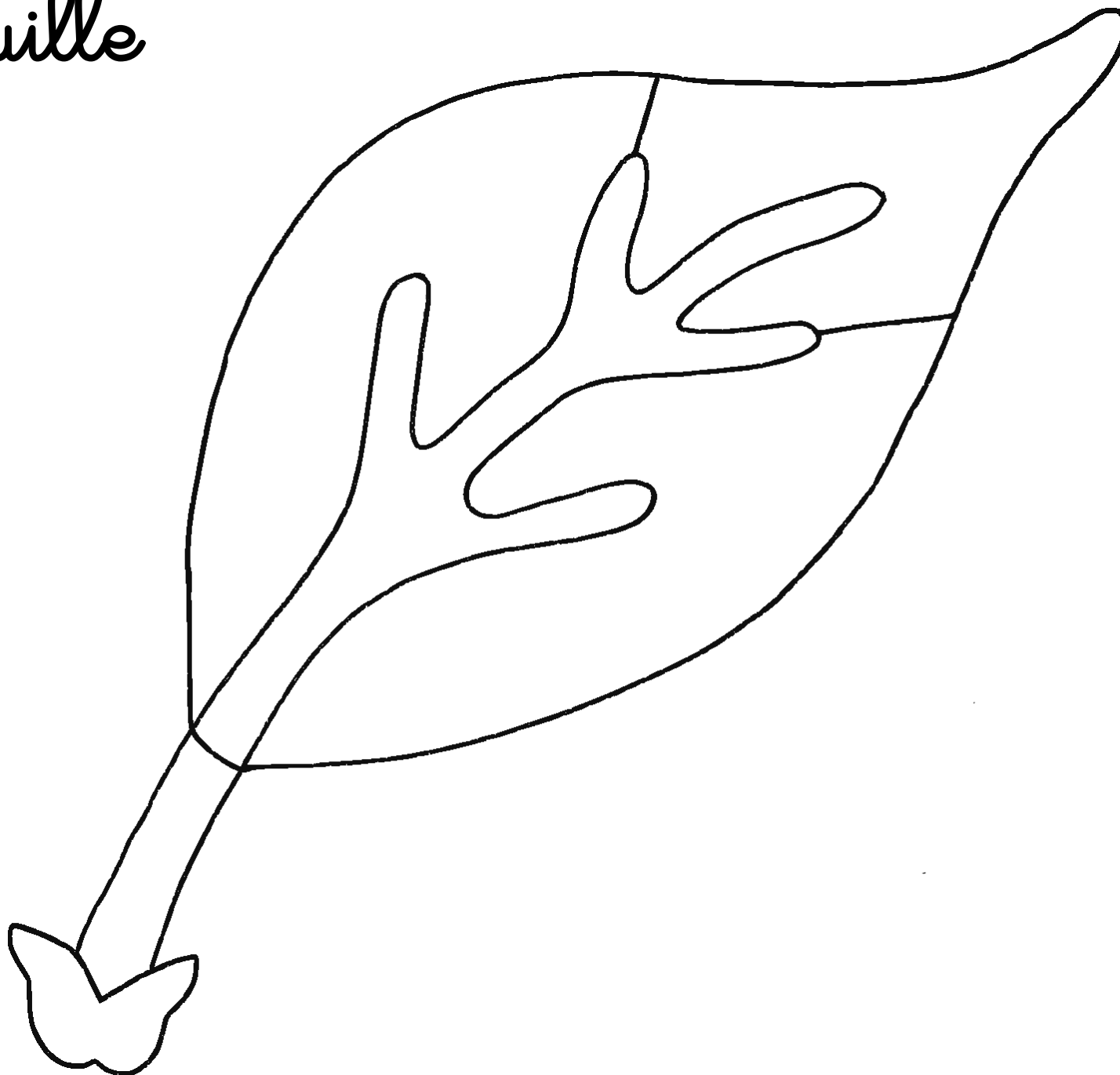
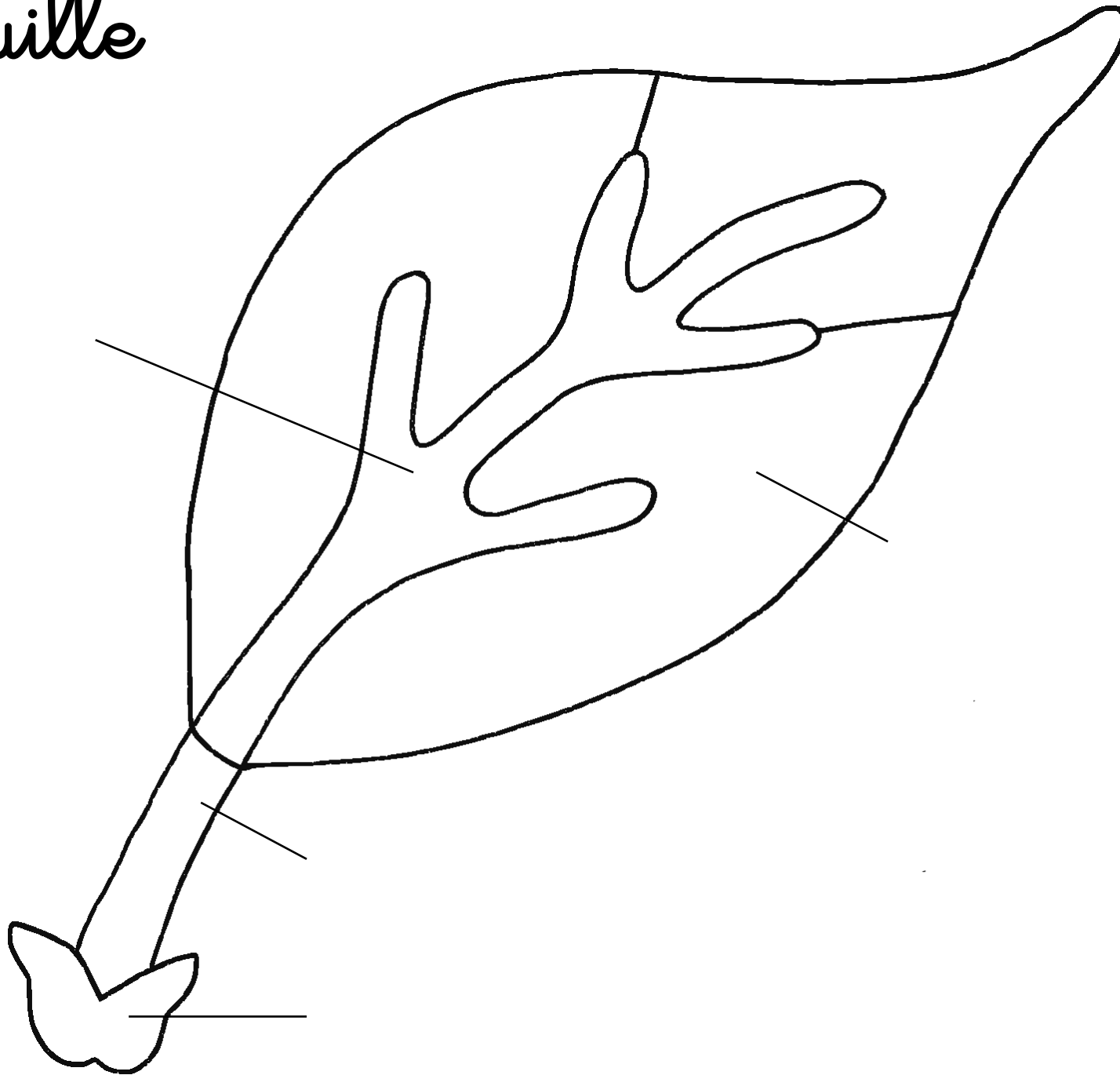


feuille



feuille



pétiole

nervures

limbe

stipules

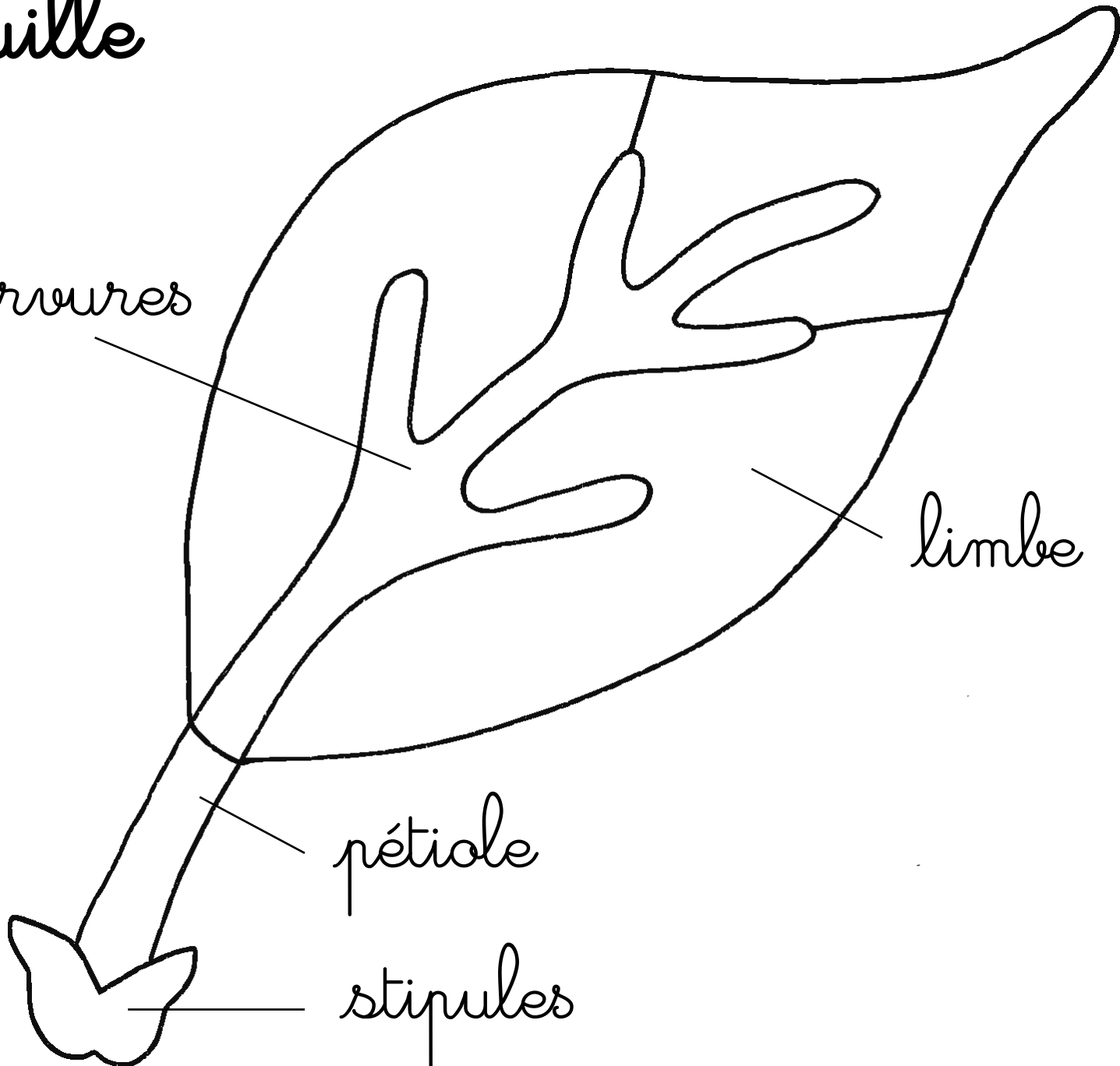
feuille

nerveures

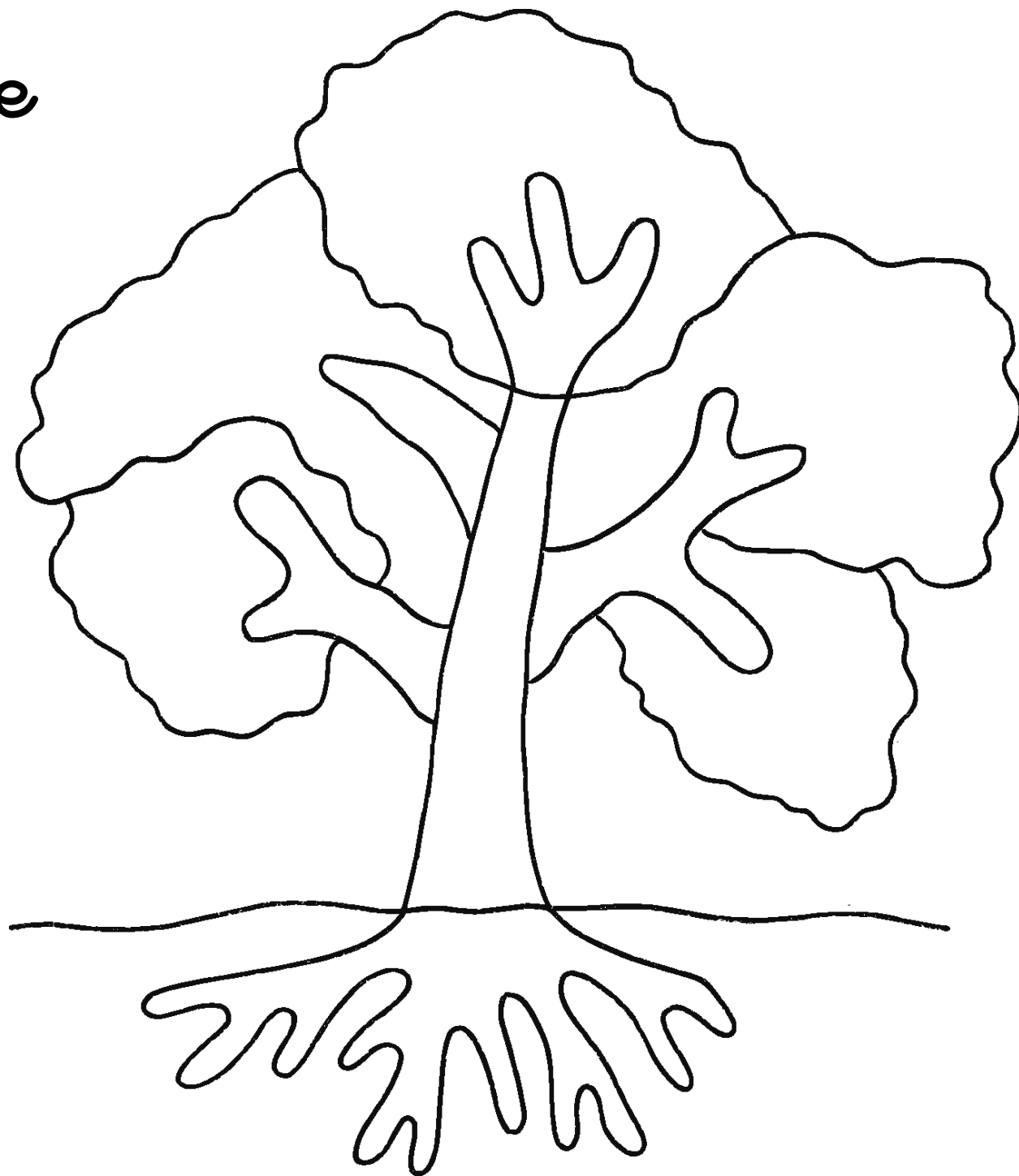
limbe

pétiole

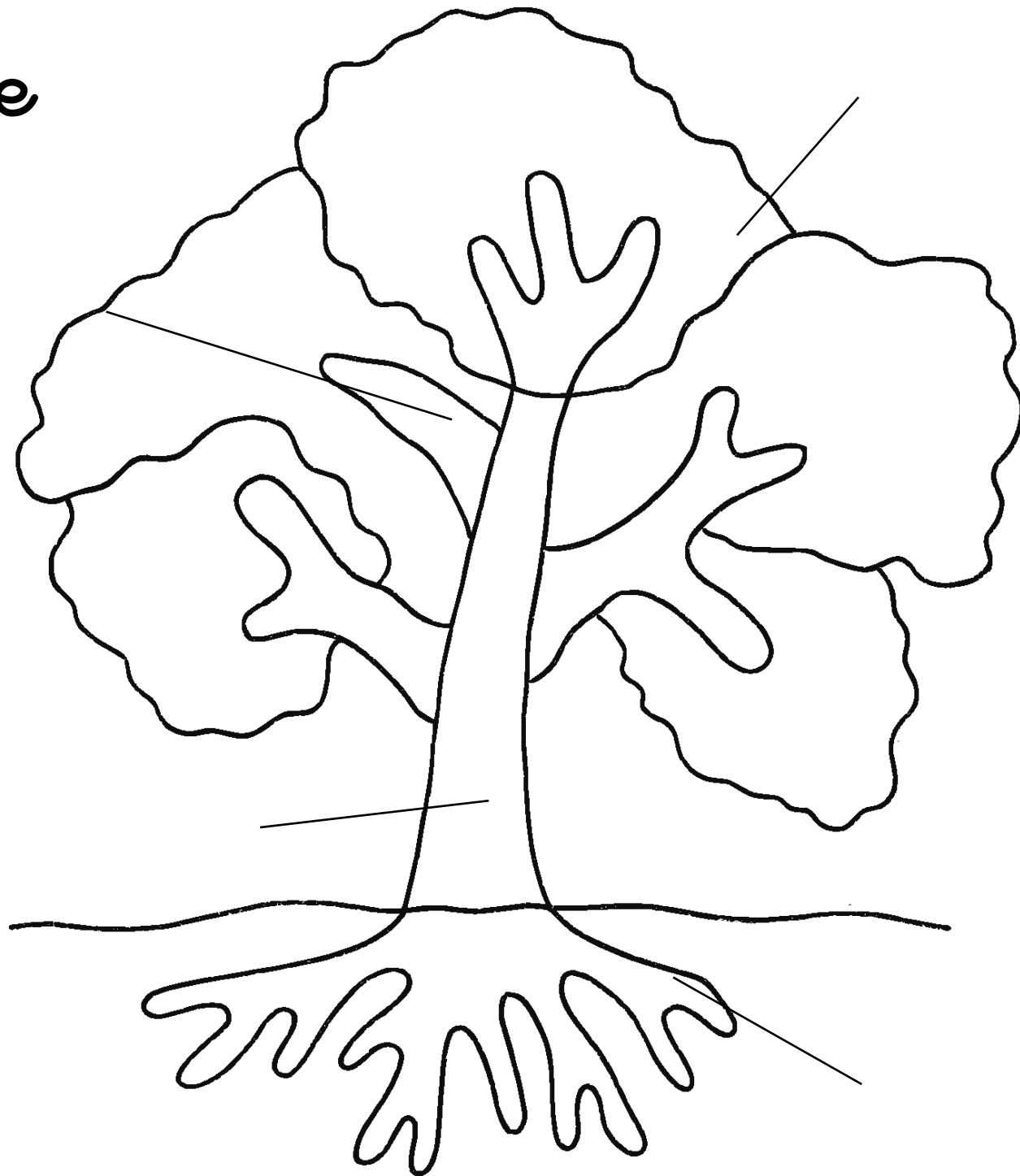
stipules



arbre



arbre



feuillage

racines

tronc

branches

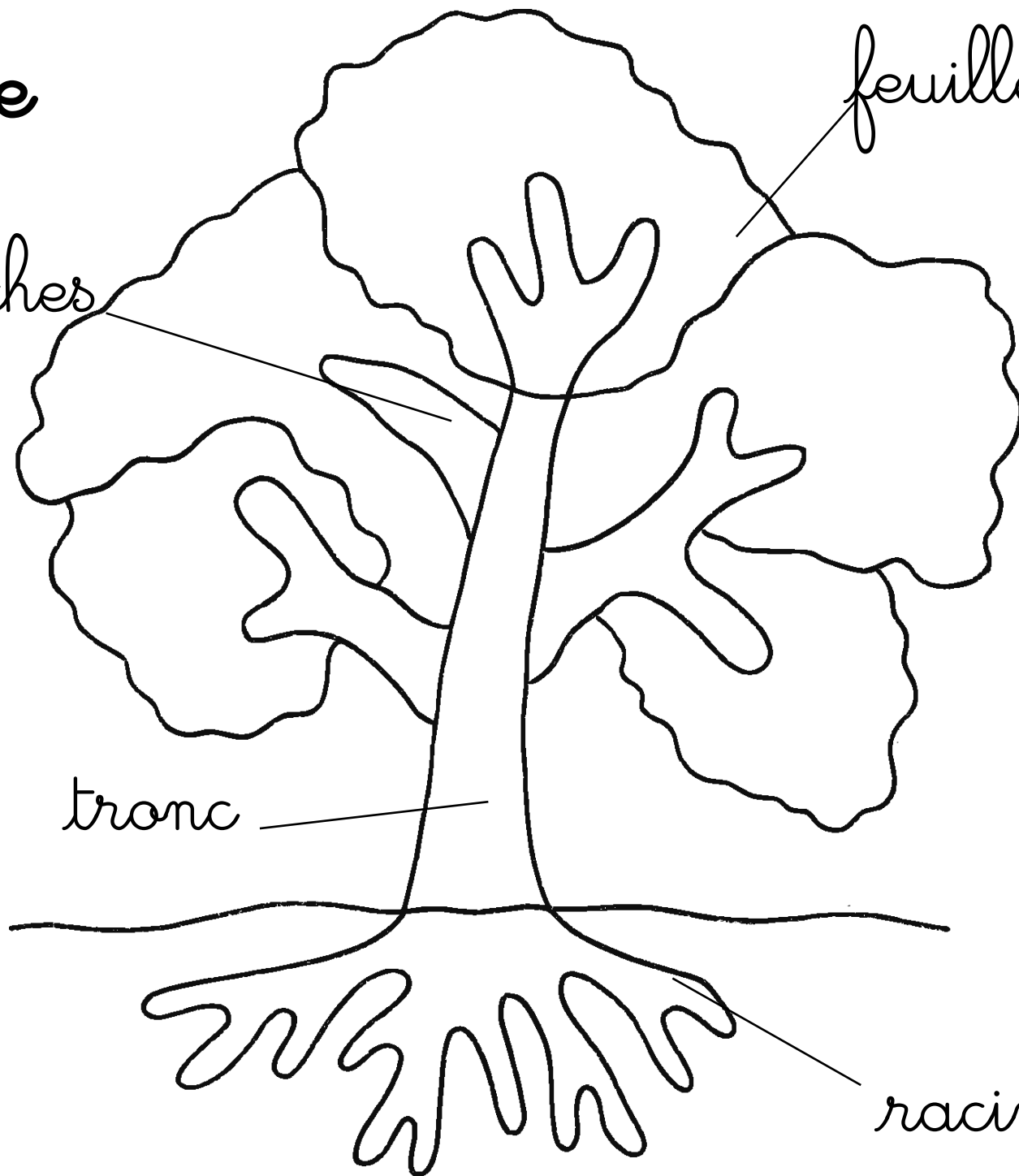
arbre

feuillage

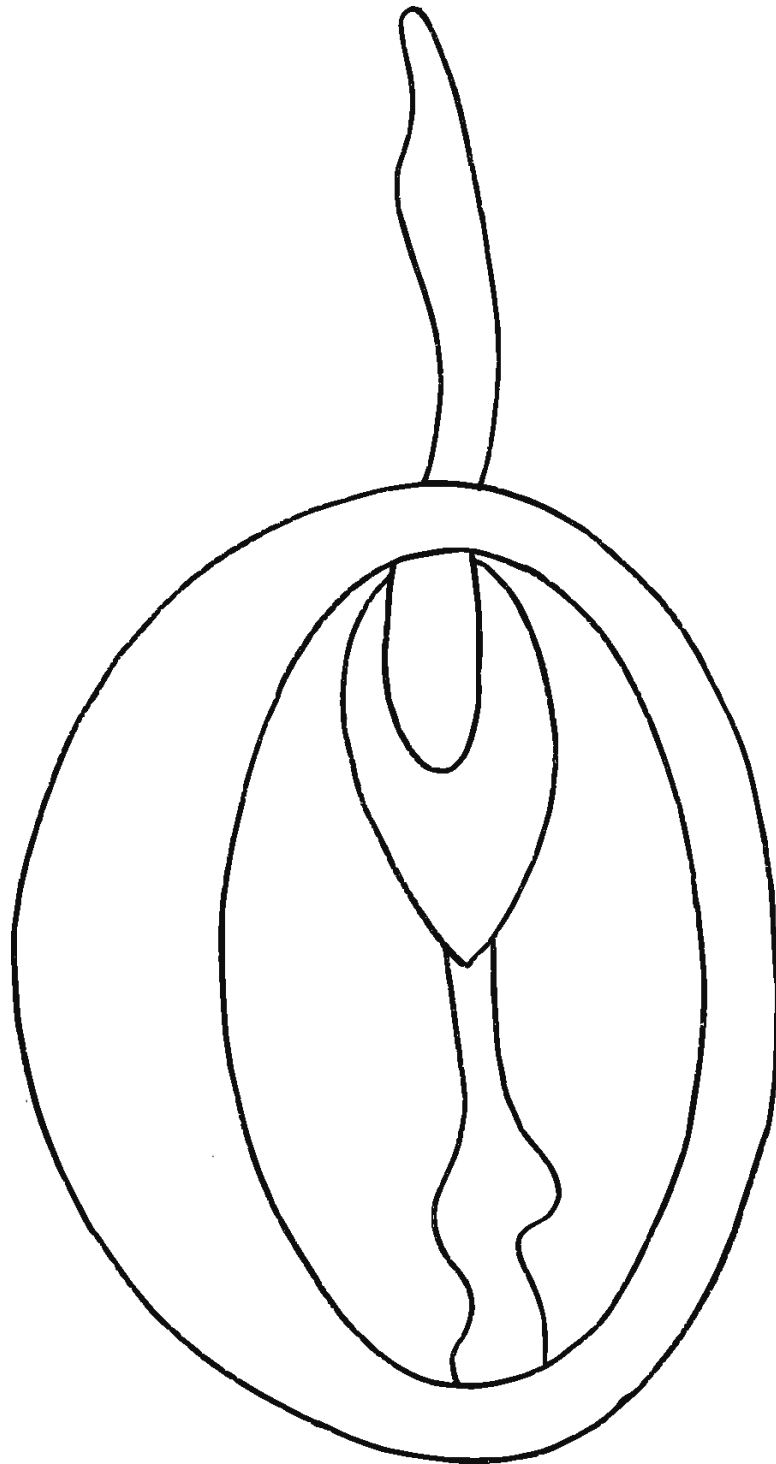
branches

tronc

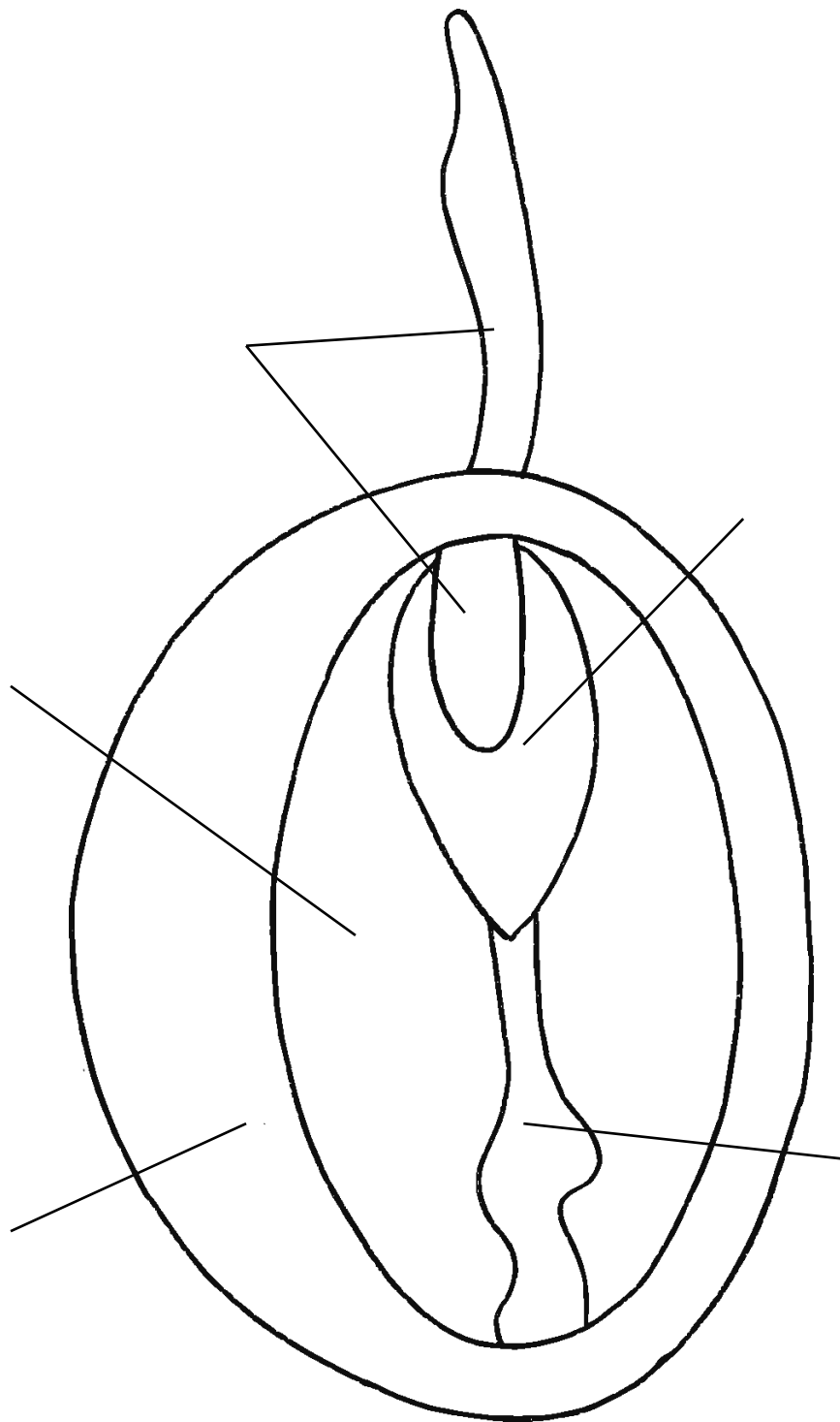
racines



graine



graine



radicule

endosperme

tégument

hypocotyle

épicotyle

graine

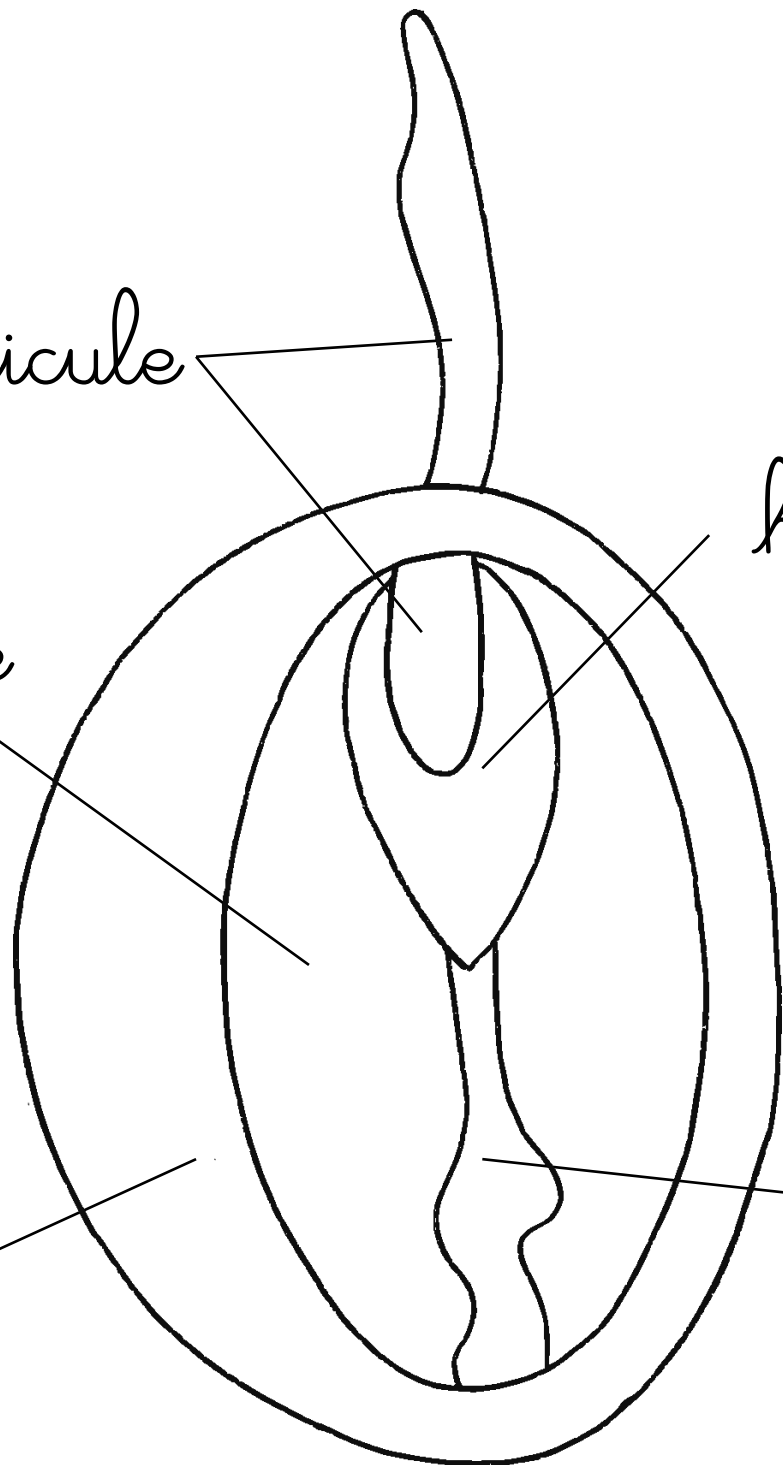
radicule

hypocotyle

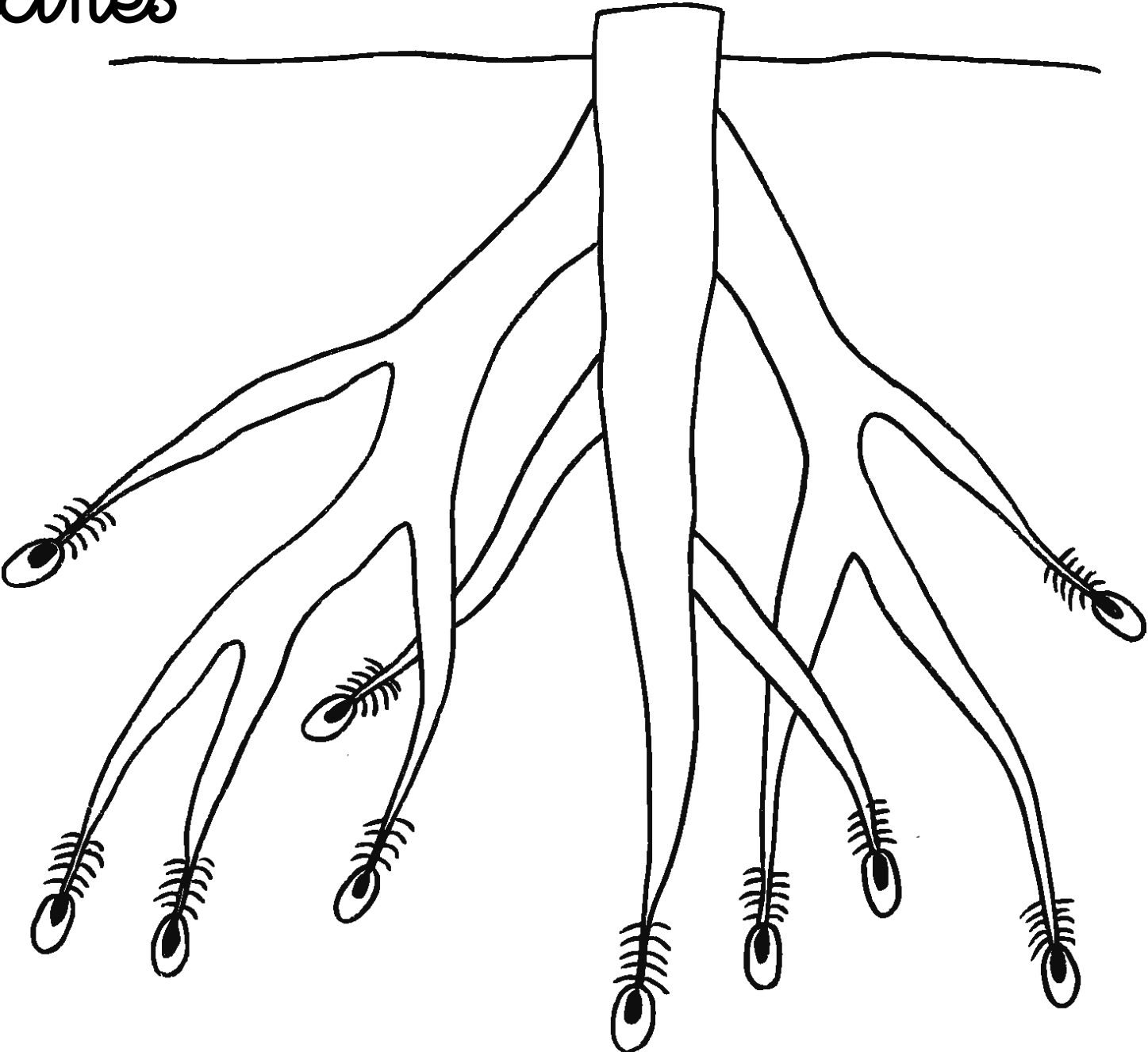
endosperme

tégument

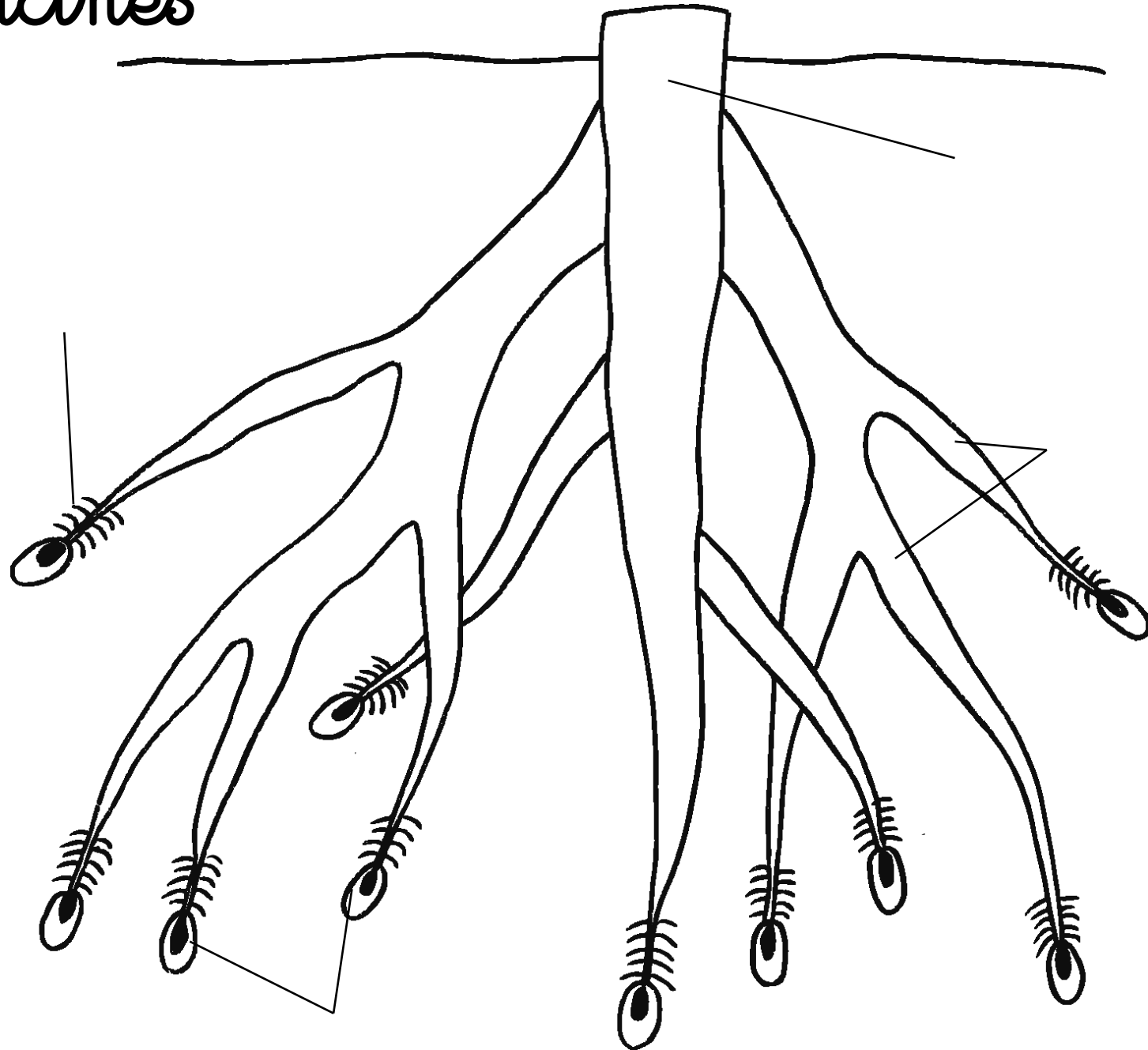
épicotyle



racines



racines



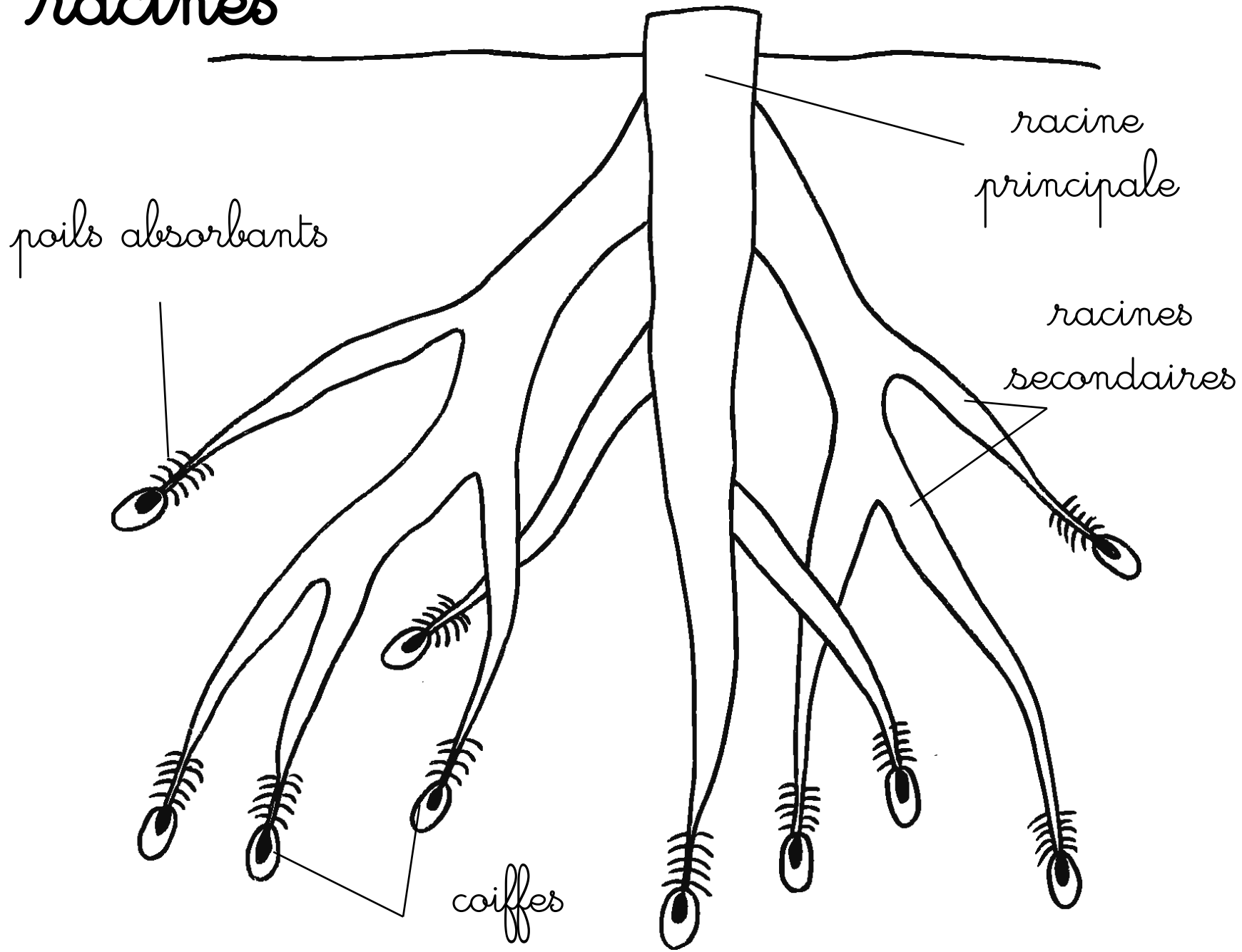
racine
principale

racines
secondaires

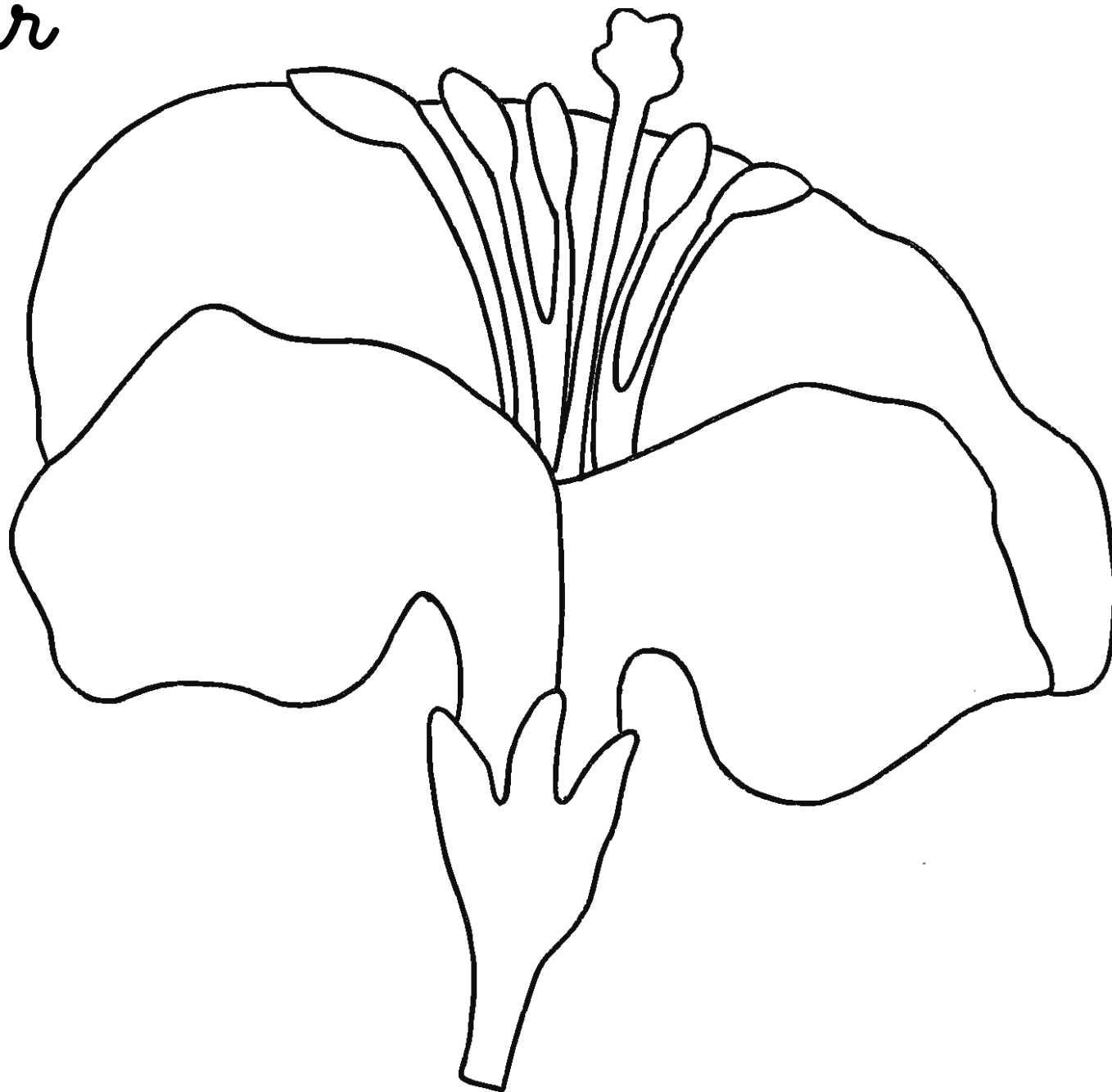
coiffes

poils
absorbants

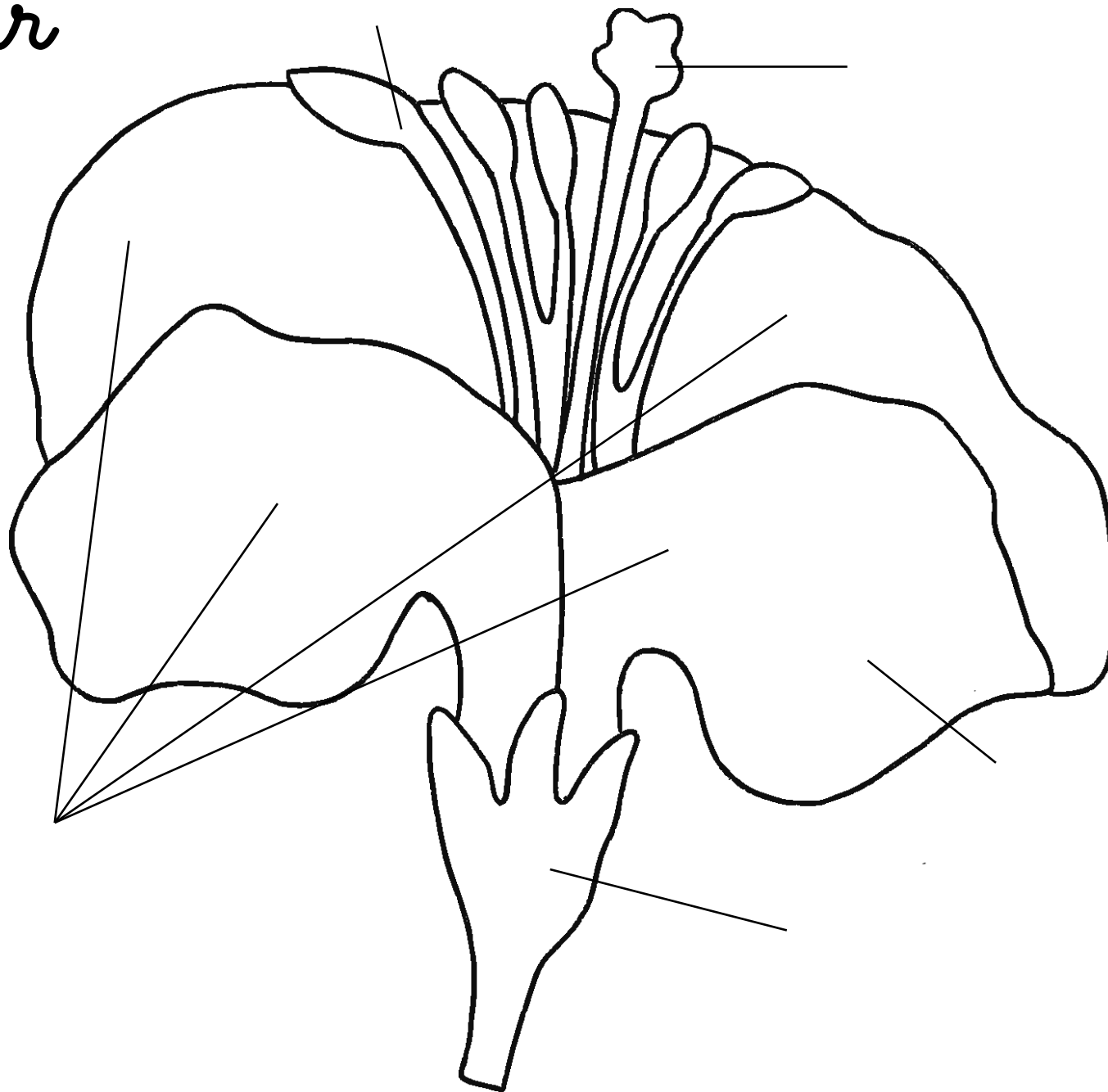
racines



fleur



fleur



étamine

pistil

corolle

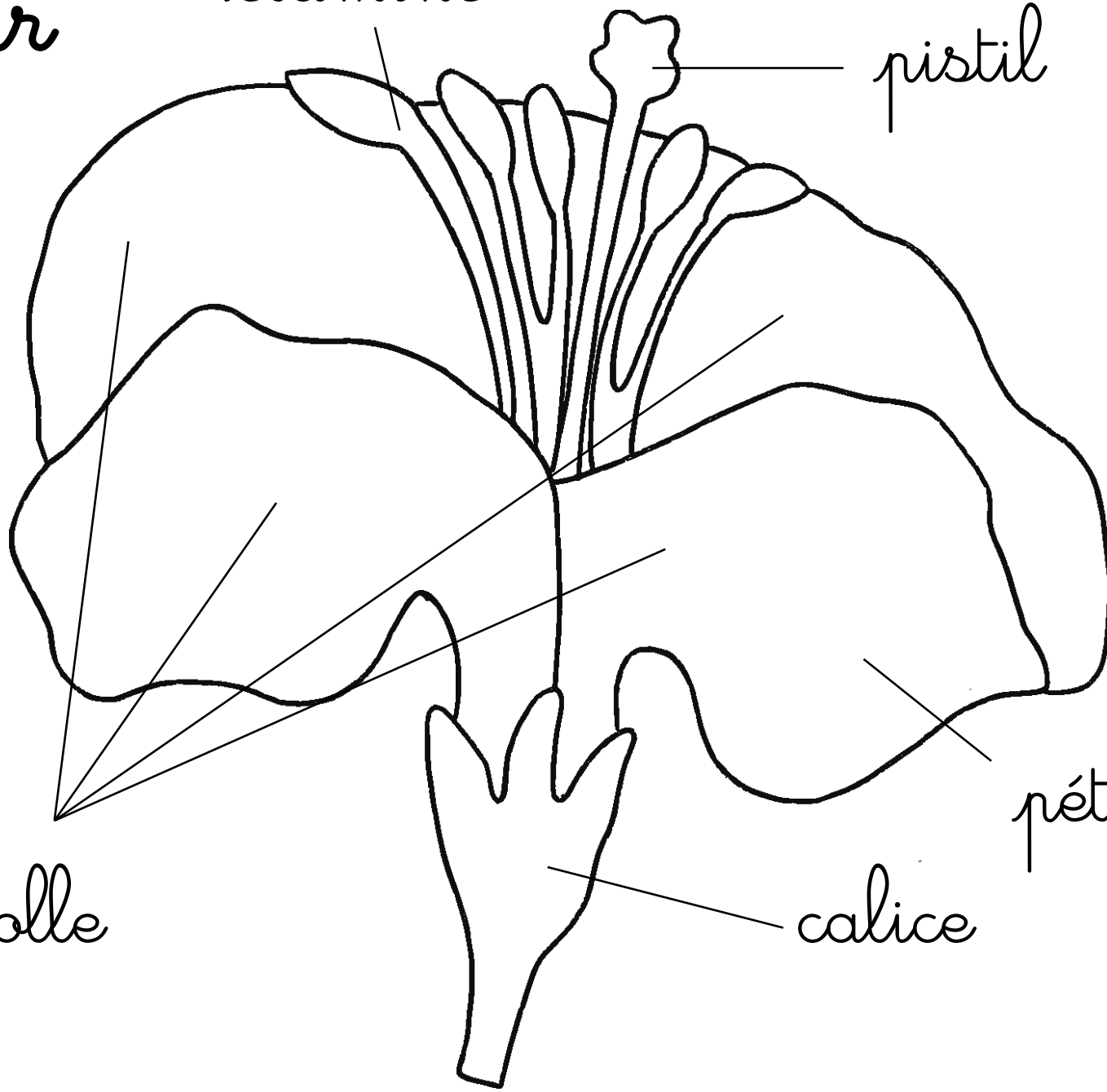
calice

pétale

fleur

étamine

pistil



corolle

pétale

calice

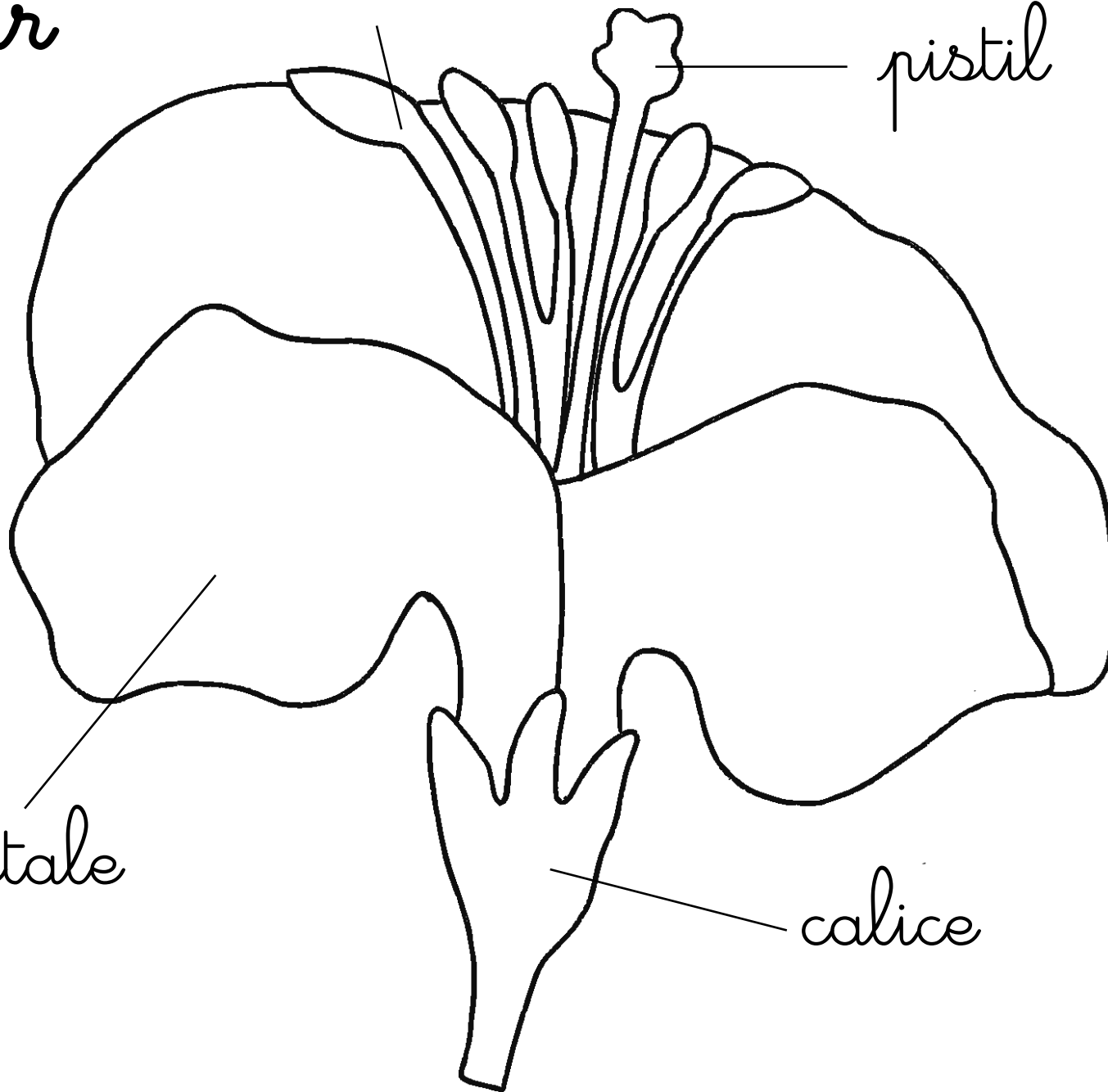
fleur





étamine





pistil






pétale






calice



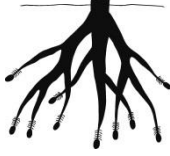


feuillage	
racines	
tronc	
branches	

pétiole	
Nervures	
limbe	
stipules	

étamine	
pistil	
corolle	
calice	
pétale	

radicule	
endosperme	
tégument	
hypocotyle	
épicotyle	

racine principale	
racines secondaires	
coiffes	
poils absorbants	